



BEDFORD LODGE  
HOTEL & SPA



4 STAR LUXURY IN THE HEART OF EAST ANGLIA

  
D LODGE  
& SPA  
★★

  
BEDFORD LODGE  
HOTEL & SPA  
★★★★

  
BEDFORD LODGE  
HOTEL & SPA  
★★★★

  
BEDFOR  
HOTEL  
★★

  
BEDFORD LODGE  
HOTEL & SPA  
★★★★

  
BEDFORD LODGE  
HOTEL & SPA  
★★★★

  
BEDFORD LODGE  
HOTEL & SPA  
★★★★

  
D LODGE  
& SPA  
★★

  
BEDFORD LODGE  
HOTEL & SPA  
★★★★

  
BEDFORD LODGE  
HOTEL & SPA  
★★★★

  
BEDFOR  
HOTEL  
★★

  
BEDFORD LODGE  
HOTEL & SPA  
★★★★

  
BEDFORD LODGE  
HOTEL & SPA  
★★★★

  
BEDFORD LODGE  
HOTEL & SPA  
★★★★

  
D LODGE  
& SPA  
★★

  
BEDFORD LODGE  
HOTEL & SPA  
★★★★

  
BEDFORD LODGE  
HOTEL & SPA  
★★★★

  
BEDFOR  
HOTEL  
★★

  
BEDFORD LODGE  
HOTEL & SPA  
★★★★

  
BEDFORD LODGE  
HOTEL & SPA  
★★★★

  
BEDFORD LODGE  
HOTEL & SPA  
★★★★

4 STAR LUXURY IN THE HEART OF EAST ANGLIA



A WARM WELCOME	2 - 3
NEWMARKET, SUFFOLK & SURROUNDING AREAS	4 - 5
GUEST ROOMS & SUITES	6 - 7
SQUIRES RESTAURANT & ROXANA BAR	8 - 9
THE HEALTH & FITNESS CLUB	10 - 11
THE SPA AT BEDFORD LODGE HOTEL	12 - 13
WEDDINGS & CIVIL CEREMONIES	14 - 15
CONFERENCE & EVENTS	16 - 17
A RICH PAST SPANNING 200 YEARS	18 - 19
HOTEL SERVICES & HOW TO FIND US	20



BEDFORD LODGE  
HOTEL & SPA





ACCOMMODATION · RESTAURANT & BAR · CONFERENCE · EVENTS · WEDDINGS · LEISURE CLUB · SPA





## A WARM WELCOME

**AWARDED** 4 Red stars by the AA, Bedford Lodge Hotel & Spa was originally a Georgian Hunting Lodge built for the sixth Duke of Bedford in the 18th Century. It wasn't until 1940 that it was converted into a hotel. Today, Bedford Lodge Hotel & Spa offers the very best in modern comfort and luxury. Our hotel epitomises a strong contemporary style whilst retaining the charm and character of its former country house beginnings. Where classic meets contemporary.

Whether you are here on business or pleasure, we can assure you of our best attention at all times. Your stay with us will be one to write home about.





NEWMARKET BOUTIQUE



FRAMLINGHAM CASTLE



NATIONAL HERITAGE CENTRE FOR HORSE RACING AND SPORTING ART



DISCOVER NEWMARKET TOUR





## NEWMARKET, SUFFOLK & SURROUNDING AREAS

**SITUATED** in the town of Newmarket, the ancestral home of British horseracing, Bedford Lodge Hotel & Spa is located beside the famous training gallops and only a very short distance from Newmarket Racecourses. If you are looking for a taste of real England then Suffolk is a great place to start. Rich in history, Suffolk offers all that you could wish for in terms of great family days out, heritage, areas of outstanding natural beauty and the Suffolk coast which is less than an hour's drive away.

From fish and chips at Aldeburgh to quintessential Lavenham, Suffolk is teeming with historical sites, imposing castles, vibrant festivals, events and farmers markets. Suffolk has it all but there's so much to see and do on our doorstep with wine tasting, horse riding, punting in Cambridge, cycling and off-road activities to name but a few. No visit is complete without a trip to the races and racing yards - perfect for equine lovers who will also enjoy a tour around the world famous National Stud, the showcase for British Thoroughbred Breeding and the National Heritage Centre for Horseracing and Sporting Art. This is situated in the remains of Charles II's sporting palace and stables, and spans five acres in the heart of Newmarket. It comprises three complementary attractions; the new National Horseracing Museum, a National Art Gallery of British Sporting Art, and a chance to meet former racehorses, in the flagship yard of Retraining of Racehorses.

A Discover Newmarket tour offers a unique opportunity to go behind the scenes at racing's headquarters and see the equine stars at work. Guided tours for groups and individuals can be organised for a half-day, full-day or longer and accommodation can be arranged if required. Further details can be found at [www.discovernewmarket.co.uk](http://www.discovernewmarket.co.uk)

For a little retail therapy, Newmarket High Street is a shopper's delight. Peruse the many boutique shops for that extra special, unique purchase. For shopping on a larger scale, historic Norwich, the shopper's paradise of Cambridge and the medieval market town of Bury St Edmunds are also within easy reach.











## GUEST ROOMS & SUITES

**BEDFORD LODGE HOTEL** has a total of 80 luxury appointed bedrooms including 21 super king-sized rooms, benefitting from the added luxury of a separate bath and shower.

All bedrooms are tastefully designed, featuring state-of-the-art televisions with Sky TV including all sports channels, complimentary Molton Brown products, fluffy robes, tea and coffee making facilities including our preferred brands of Tea Pigs tea and Paddy & Scott's cafetiere coffee. You will also find complimentary mineral water, drinks cooler and personal safe in all rooms.

For 'suite dreams' as an extra special treat, you can upgrade to one of our 6 executive suites and enjoy added extras including Molton Brown goody bags, fresh fruit bowl and complimentary chocolates. Suite 6 boasts a balcony, overlooking our beautiful gardens - the perfect place to enjoy brunch in the mid-morning sun.

Inter-connecting rooms are also available which are perfect if you have a large family/group including bedrooms with disabled access.

Whatever your choice, all of our bedrooms feature the finest Egyptian cotton linen, cosy throws and super comfy king-size beds - guaranteeing you a restful night's sleep before waking to a delicious breakfast.







## SQUIRES RESTAURANT & ROXANA BAR

**OPEN** to both residents and non-residents, our 2AA Rosette Squires Restaurant provides a completely modern dining experience; the artistic décor and eclectic menus making for a charismatic ambience, unlike anything else in Newmarket. Whether there are calls for celebration, dining out with the family or an intimate dinner with a loved one, Squires attracts an extremely diverse crowd both locally and beyond.

The Squires contemporary wine and champagne bar is the perfect place to enjoy a pre-dinner drink or light meal. Our expertly selected wine list compliments our menus beautifully and includes everything from the finest Champagnes to the most exquisite Bordeaux. Our menus are extremely diverse and we only use the finest seasonal ingredients, most of which are sourced locally. We are passionate about the environment and sourcing produce locally reaps many benefits including minimising our carbon footprint, reducing the distance from field to fork and supporting our local community.

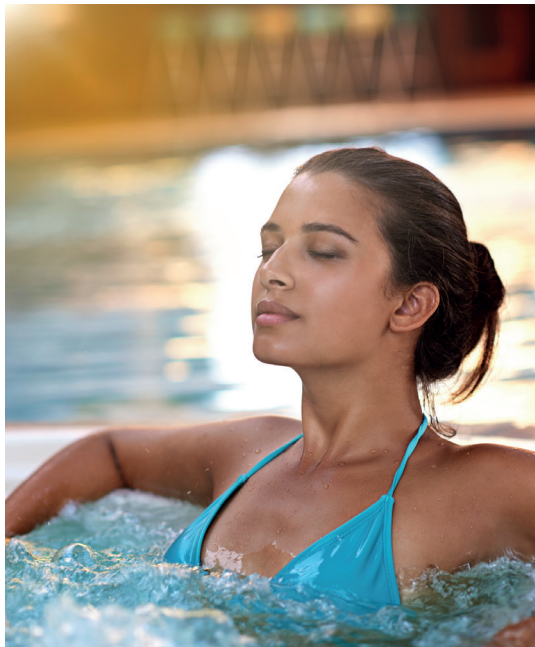
For a more informal dining experience, the Roxana Bar offers great value for lighter bites. Again, open to both residents and non-residents, the Roxana Bar is a great casual social meeting place for drinks with friends, family and business associates.

During sunny weather, you can enjoy afternoon tea on our beautiful terrace, overlooking our landscaped gardens. During the cooler months, sit in front of our roaring log fire with a glass of your favourite something.

# Squires











## THE HEALTH & FITNESS CLUB

**THE HEALTH & FITNESS CLUB** offers a wide range of state-of-the-art equipment including the latest cardio and resistance training apparatus.

Fully air-conditioned, the gym has a large flat screen TV and superb sound system. Our State of the Art Life Fitness cardiovascular equipment features personal TVs with a diverse selection of channels, giving the option to catch up on the latest soaps, news, sports and even your emails. After a vigorous workout, you can take a swim in our tranquil 15 metre pool or relax in the spa bath, sauna and steam rooms.

Our fitness studio holds a variety of classes which are taught by our highly qualified fitness consultants. Classes are reviewed periodically and may be subject to change.

Facilities at The Health & Fitness Club are complimentary for guests staying with us but if you would like to become a member then we have some fantastic membership packages to suit individual needs and budgets.

By becoming a member, there are many benefits that you can enjoy including a discount on food in our award-winning Squires Restaurant and a discount on all soft drinks in the Roxana bar.

**the health  
& fitness club**  
BEDFORD LODGE HOTEL







## THE SPA AT BEDFORD LODGE HOTEL

**THE SPA** at Bedford Lodge Hotel, Suffolk's luxury destination spa is situated adjacent to the hotel. The stand-alone spa offers the region the ultimate in refined indulgence and luxurious relaxation. The Spa is housed in the sympathetically restored Georgian Bedford Cottage which once formed part of the estate of the sixth Duke of Bedford.

Combined with the stunning backdrop of the hotel, The Spa offers a serene environment in which to relax and unwind from daily life. Whether your desire is health, beauty, revitalisation or just pure relaxation, our dedicated team of therapists provide the highest standards of client care.

ESPA, a globally acclaimed leader in spa brands, is our main partner. Combining science and nature, experience age defying facials, anti-stress body treatments and ESPA for Men. As well as ESPA, we offer treatments featuring Jessica Nails for both manicures and pedicures to achieve and maintain naturally beautiful nails, Mii tanning and make up lines and the sought after Escentric Molecules Fragrance collection.

Spa Day and Break visitors relax in our roof-top hot tub and therapeutic hydrotherapy pool featuring five independent water features. Our carefully conceived lounge menu features drinks and light snacks to indulge in before or after your treatments.

the  spa  
BEDFORD LODGE HOTEL







ACCOMMODATION · RESTAURANT & BAR · CONFERENCE · EVENTS · WEDDINGS · LEISURE CLUB · SPA





## WEDDINGS & CIVIL CEREMONIES

**BEDFORD LODGE HOTEL** offers the perfect venue for your wedding. Your wedding day is not only about the day itself but the journey travelled there.

Licensed for civil weddings, you can choose to have your ceremony as well as your reception at the hotel – which is great for friends and family who have a distance to travel. From small and intimate to bold and beautiful, our 3 self contained banqueting suites can accommodate from 10 to 150 guests.

And in our destination spa, you can luxuriate in a pre-wedding pamper break or maybe get the girls together for a super-luxe hen party.

So if you've popped the question or said "I do" and you are considering getting married in Suffolk, why not opt for one of the finest wedding venues this beautiful county has to offer. Our professional wedding coordinator will be on hand to ensure that your day is nothing less than spectacular and guide you every step of the way.







## CONFERENCE & EVENTS

**BEDFORD LODGE HOTEL** is one of the leading venues for conferences and events in Suffolk and Cambridgeshire. Ideally located in Newmarket, we are close to the A11, A14 and M11 motorway. We are also a short drive from the centre of Cambridge, less than an hour from central London and 30 minutes from Stansted Airport.

Our six stylish state-of-the-art conference and events rooms are some of the most advanced in East Anglia. All rooms have complimentary wireless internet access and air conditioning with some benefitting from high definition Fujitsu interactive plasma display monitors featuring the very latest presentation technology and Bose sound systems. The hotel also has complimentary parking facilities for up to 120 cars.

We have some excellent day delegate and 24 hour rates in place and both include room hire, mineral water, LCD projector, screen and flipchart, tea and coffee, granola bars/cookies/afternoon cake and lunch which can either be a two course hot fork buffet, finger buffet or sit down. If opting for the 24 hour rate, you can expect dinner, accommodation, breakfast and complimentary use of our leisure facilities in addition to the above. Packages can also be tailored to suit your requirements.

Whether you are holding an informal meeting for just two people or a high powered corporate seminar for 180, our highly experienced conference team will not only help with the planning, but will be on hand throughout your event to ensure everything runs as smoothly as possible - enabling you to meet with success and get the positive results you desire.







**GEORGE ALEXANDER BAIRD AKA 'THE SQUIRE'**



ACCOMMODATION · RESTAURANT & BAR · CONFERENCE · EVENTS · WEDDINGS · LEISURE CLUB · SPA



# A RICH PAST SPANNING 200 YEARS

**HISTORY** lovers will revel in a visit to Bedford Lodge Hotel & Spa, which has a rich past spanning almost 200 years, peopled with characters who were hugely influential in British society. Built, in around 1820 as a hunting lodge for John Russell, the sixth Duke of Bedford, the Duke was a notable politician who was the driving force behind the redevelopment of London's Covent Garden as well as the father of namesake John Russell, who was twice Prime Minister, serving for 6 years in 1846 and then again in 1865 for just under a year.

On the estate at the time of the Duke's ownership were the house and stables, as well as a cottage. The property passed to his eldest son Francis Russell, the seventh Duke of Bedford, on his death in 1839. Also known as the Marquis of Tavistock, the seventh Duke was a shrewd businessman as well as a politician, sitting as MP for Peterborough and later Bedfordshire before becoming a peer of the House of Lords. Incidentally, his wife Anna Maria is accredited with creating the cultural British phenomenon that is afternoon tea!

When the seventh Duke of Bedford died in 1861, the estate was purchased by Sir Joseph Hawley, a well-known racehorse owner. Hawley owned 4 horses who were all Epsom Derby winners: 'Teddington' (1851), 'Beadsman' (1858), 'Musjid' (1859) and 'Blue Gown' (1868). Over the next few years, the estate changed hands twice, first to racehorse trainer William Butler who demolished the Lodge's original stables and then to fellow trainer Joe Dawson who built the main range of stables in 1864.

After Dawson's death in 1880, the estate came into the ownership of racehorse manager Captain James Octavius Machell. Machell, who was racing manager and partner to James Jewitt, the esteemed trainer of Triple Crown winner, Isinglass, extended the house in around 1885 to provide additional accommodation, including a saloon for boxing matches for the estate's lessee George Alexander Baird - the hotel's most notable of residents. Baird was a notorious character with a love of gambling, womanising and hard drinking. A well-known figure in the 19th century racing fraternity, another of his passions was women and in 1890, he began a tempestuous affair with actress Lillie Langtry, a former mistress of Edward VII. His memory lives on in the name of our award-winning Restaurant, Squires.

When Baird died in 1893, the lodge and stables were sold to Frederick Arthur Stanley, the 16th Earl of Derby who had just years before created ice hockey's Stanley Cup while serving as Governor General of Canada. The Earl extended the lodge between 1904 and 1905.

In the 1920s and for the first time in its history, Bedford Lodge's name was changed - retitled Calvin House by William Maxwell Aitken. Also known as Lord Beaverbrook, Aitken had founded the Sunday Express in 1918 and was heralded as the first baron of Fleet Street. The estate was returned to its former title of Bedford Lodge when it was owned by famous jockey and trainer Harry Wragg, who lived there with his family from 1930.

In the 1940s, Bedford Lodge became a family-run hotel and has enjoyed decades of success as such ever since. Its 21st century incarnation struck by a chic, modern outlook which is underpinned with a real depth of historical significance.



# HOTEL SERVICES

## ACCOMMODATION

- 6 luxurious executive suites
- 21 ensuite super king-size bedrooms
- 50 ensuite king-size bedrooms
- flat screen HD television including Sky Sports
- fully air-conditioned
- complimentary Molton Brown products
- complimentary mineral water
- drinks cooler
- safe
- hair dryer
- tea & coffee making facilities with fresh milk
- The Mews has 1 Executive Suite, 2 Superiors and a private dining/conference room

## RESTAURANT & BAR

- award-winning Squires Restaurant
- Roxana Bar
- 24hr room service

## THE HEALTH & FITNESS CLUB

- 15 metre indoor heated pool with spa bath
- fitness studio
- sauna
- steam room
- sunbeds
- gymnasium with free weights area
- fitness classes
- individual membership
- corporate membership

## WEDDINGS

- licensed for civil ceremonies
- 10 - 150 guests
- various packages available

## THE SPA AT BEDFORD LODGE HOTEL

- extensive selection of spa breaks and spa days
- ESPA signature treatments
- microdermabrasion and IPL treatments
- manicures and pedicures
- maternity treatments
- dry floatation table
- roof-top hot tub & therapeutic hydrotherapy pool
- healthy and indulgent refreshment lounge

## CONFERENCE & EVENTS (2 - 180 DELEGATES)

- 6 conference rooms & banqueting suites
  - training courses / seminars
  - board meetings
  - interviews
  - team building
  - exhibitions / trade shows
  - formal / informal lunches & dinners
  - dinner dances / private dining
  - Christmas party nights
- complimentary on-site car parking
- complimentary Wi-Fi
- flexible delegate packages

# HOW TO FIND US

BEDFORD LODGE HOTEL & SPA is situated in Newmarket and is easily accessible by road and rail. The hotel is close to the A14, A11 and the M11 motorway.

Bury Road, Newmarket, Suffolk CB8 7BX

T: 01638 663175 F: 01638 667391

email: [info@bedfordlodgehotel.co.uk](mailto:info@bedfordlodgehotel.co.uk)

[www.bedfordlodgehotel.co.uk](http://www.bedfordlodgehotel.co.uk)



  
D LODGE  
& SPA  
★★

  
BEDFORD LODGE  
HOTEL & SPA  
★★★★

  
BEDFORD LODGE  
HOTEL & SPA  
★★★★

  
BEDFOR  
HOTEL  
★★

  
BEDFORD LODGE  
HOTEL & SPA  
★★★★

  
BEDFORD LODGE  
HOTEL & SPA  
★★★★

  
BEDFORD LODGE  
HOTEL & SPA  
★★★★

  
D LODGE  
& SPA  
★★

  
BEDFORD LODGE  
HOTEL & SPA  
★★★★

  
BEDFORD LODGE  
HOTEL & SPA  
★★★★

  
BEDFOR  
HOTEL  
★★

  
BEDFORD LODGE  
HOTEL & SPA  
★★★★

  
BEDFORD LODGE  
HOTEL & SPA  
★★★★

  
BEDFORD LODGE  
HOTEL & SPA  
★★★★

  
D LODGE  
& SPA  
★★

  
BEDFORD LODGE  
HOTEL & SPA  
★★★★

  
BEDFORD LODGE  
HOTEL & SPA  
★★★★

  
BEDFOR  
HOTEL  
★★

  
BEDFORD LODGE  
HOTEL & SPA  
★★★★

  
BEDFORD LODGE  
HOTEL & SPA  
★★★★

  
BEDFORD LODGE  
HOTEL & SPA  
★★★★





**BEDFORD LODGE HOTEL & SPA**

BURY ROAD, NEWMARKET, SUFFOLK CB8 7BX

T: +44 (0) 1638 663175

F: +44 (0) 1638 667391

[INFO@BEDFORDLODGEHOTEL.CO.UK](mailto:INFO@BEDFORDLODGEHOTEL.CO.UK)

[WWW.BEDFORDLODGEHOTEL.CO.UK](http://WWW.BEDFORDLODGEHOTEL.CO.UK)